

Table of Contents

<u>ABOUT THE BURKARD SCHOOL'S PANDEMIC RECOVERY FRAMEWORK.....</u>	<u>4</u>
<u>VACCINATION</u>	<u>5</u>
<u>VACCINATION VERIFICATION</u>	<u>8</u>
<u>MASKS.....</u>	<u>9</u>
<u>MASKS INDOORS.....</u>	<u>9</u>
<u>MASKS OUTDOORS</u>	<u>10</u>
<u>ADDITIONAL MASK GUIDANCE FROM CAL/OSHA</u>	<u>11</u>
<u>PHYSICAL DISTANCING.....</u>	<u>11</u>
<u>GATHERINGS.....</u>	<u>12</u>
<u>VENTILATION.....</u>	<u>12</u>
<u>STAY HOME WHEN SICK AND GET TESTED.....</u>	<u>12</u>
<u>WHEN STUDENTS OR STAFF ARE SICK AT SCHOOL</u>	<u>13</u>
<u>HAND HYGIENE.....</u>	<u>14</u>
<u>CLEANING.....</u>	<u>14</u>
<u>COHORTING.....</u>	<u>15</u>
<u>ADJUSTING OUR PLAN.....</u>	<u>15</u>
<u>VISITORS.....</u>	<u>15</u>
<u>EXTRACURRICULAR AND ATHLETIC ACTIVITIES</u>	<u>16</u>

<u>TRAVEL.....</u>	<u>16</u>
TRAVEL RECOMMENDATIONS AND REQUIREMENTS	16
<u>HEALTH SCREENING</u>	<u>17</u>
<u>COVID TESTING</u>	<u>17</u>
<u>RESPONSE TESTING AND QUARANTINE</u>	<u>18</u>
TESTING AND QUARANTINE OF VACCINATED CLOSE CONTACTS.....	18
TESTING OF THOSE WHO PREVIOUSLY HAD COVID-19	19
TESTING AND QUARANTINE OF UNVACCINATED CLOSE CONTACTS	19
<u>ISOLATION</u>	<u>21</u>
<u>CASE REPORTING AND CONTACT TRACING</u>	<u>26</u>
<u>OUTBREAKS</u>	<u>27</u>

About The Burkard School's Pandemic Recovery Framework

The Burkard School's **Pandemic Recovery Framework** is based on the San Mateo County Coalition for Safe Schools and Communities' [Pandemic Recovery Framework](#) and aligns closely with the Centers for Disease Control and Prevention (CDC) [guidance](#). This framework incorporates San Mateo County Health, CDPH, CDC, and [Cal/OSHA](#) guidance.

As conditions and public health orders change, the content and guidance in this framework will continue to be updated as well.

Vaccination

Vaccination is an important strategy to protect students, staff, and community members. Vaccination is required of all TBS staff unless they are exempt due to a disability (covered by the ADA), have a disability that affects their ability to have a full immune response to vaccination, or have a sincerely held religious belief or practice (covered by Title VII of the Civil Rights Act of 1964). Those staff members may be entitled to a reasonable accommodation that does not pose an undue hardship on the operation of the employer's business.

From the CDC:

Vaccination is the leading public health prevention strategy to end the COVID-19 pandemic. People who are fully vaccinated against COVID-19 are at low risk of symptomatic or severe infection. A growing body of evidence suggests that people who are fully vaccinated against COVID-19 are less likely to become infected and develop symptoms and are at substantially reduced risk from severe illness and death from COVID-19 compared with unvaccinated people.

Only a small proportion of fully vaccinated people get infected (breakthrough infections), even with the Delta variant. Moreover, when these infections occur among vaccinated people, they tend to be milder than among those who are unvaccinated. However, preliminary evidence suggests that fully vaccinated people who are infected with the Delta variant can be infectious and can spread the virus to others. To reduce the risk of becoming infected with the Delta variant and spreading it to others, students, teachers, and school staff should continue to use layered prevention strategies including universal masking in schools.

The CDC recommends vaccination for everyone 12 years and older to help protect against COVID-19. **Parents of TBS students are strongly encouraged to vaccinate their children against COVID-19 as soon as their age group is eligible.**

Please visit the [CDC website](#) for more information on vaccines for children and teens.

Additional California-specific vaccine access information is available on the [Safe Schools Hub](#) and [Vaccinate All 58 – Let's Get to Immunity](#).

[San Mateo County Health](#) provides vaccination information on its website.



COVID-19 Vaccine for Children and Teens

CDC recommends vaccination for everyone 12 years and older to help protect against COVID-19.

Why does my child need a COVID-19 vaccine?

COVID-19 vaccines help protect kids from getting COVID-19. Getting a COVID-19 vaccine will also help keep them from getting seriously ill even if they do get COVID-19.

When should my child be vaccinated?

All children who are 12 years and older should get a COVID-19 vaccine. If your child hasn't gotten their vaccine yet, talk to their doctor about getting it as soon as possible.

Are COVID-19 vaccines safe for my child?

Yes. COVID-19 vaccination provides safe and effective protection against the virus that causes COVID-19. COVID-19 vaccines have been used under the most intensive safety monitoring in U.S. history.

The Pfizer-BioNTech COVID-19 Vaccine is now available for everyone ages 12 years and older. In the clinical trial for children 12 through 15 years old, no safety concerns were identified with the Pfizer-BioNTech COVID-19 Vaccine.

All authorized and recommended COVID-19 vaccines:

- are safe,
- are effective
- help protect from severe illness

The clinical trial also showed that the Pfizer-BioNTech vaccine was 100% effective at preventing COVID-19 with symptoms in children 12 through 15 years old. In addition, children's immune systems responded to the vaccine in a way similar to that of older teens and young adults. To get the most protection, your child will need 2 shots given 3 weeks (21 days) apart.

Before, during and after your child's vaccination

- Tell the doctor or nurse about any allergies your child may have.
- Comfort your child during the appointment.
- To prevent fainting and injuries related to fainting, your child should be seated or lying down during vaccination and for 15 minutes after the vaccine is given.
- After your child's COVID-19 vaccination, you will be asked to stay for 15–30 minutes so your child can be observed in case they have a severe allergic reaction and need immediate treatment.

Can my child get a COVID-19 vaccine during the same visit with other vaccines?

Yes. Your child can get a COVID-19 vaccine and other vaccines at the same visit. Experience with other vaccines has shown that the way our bodies develop protection after getting vaccinated (immune response) and possible side effects of vaccines are generally the same when given alone or with other vaccines. Talk with your healthcare provider to learn more.





www.cdc.gov/coronavirus/vaccines

What are the side effects?

Your child may have some side effects, which are normal signs that their body is building protection. These side effects may affect your child's ability to do daily activities, but they should go away in a few days. Some people have no side effects. Side effects from the second shot may be more intense than after the first shot.

Possible side effects after COVID-19 vaccination include:

On the arm where you got the shot:	Throughout the rest of your body:
<ul style="list-style-type: none"> ■ Pain ■ Redness ■ Swelling 	<ul style="list-style-type: none"> ■ Tiredness ■ Headache ■ Muscle pain ■ Chills ■ Fever ■ Nausea 

The benefits of COVID-19 vaccination far outweigh any potential risk of side effects. COVID-19 vaccination will help protect your child from getting COVID-19.

Contact your child's healthcare provider:

- If the redness or tenderness where the shot gets worse after 24 hours.
- If the side effects are worrying you or do not seem to be going away after a few days.

Who is paying for COVID-19 vaccines?

The federal government is providing COVID-19 vaccines free of charge to all people living in the United States, regardless of their immigration or health insurance status. COVID-19 vaccination providers **cannot**:

- Charge you for the vaccine
- Charge you directly for any administration fees, copays, or coinsurance
- Deny vaccination to anyone who does not have health insurance coverage, is underinsured, or is out of network
- Charge an office visit or other fee to the recipient if the only service provided is a COVID-19 vaccination
- Require additional services in order for a person to receive a COVID-19 vaccine.

Where can I learn more?

Talk to your child's doctor or nurse to learn more about COVID-19 vaccines and other vaccines that your child may need.

You can also find out more at www.cdc.gov/coronavirus.

Vaccination Verification

Verification of vaccination status can inform important school practices around testing, contact tracing, quarantine, and isolation. The following verification requirements are from a [State Public Health order](#).

All schools and districts must verify the vaccination status of all workers. “Workers” refers to all paid and unpaid adults serving in the school settings. They include, but are not limited to, certificated and classified staff, analogous staff working in private school settings, and volunteers who are on-site at a school campus supporting school functions.

According to [CDPH](#), only the following modes may be used as proof of vaccination:

- COVID-19 Vaccination Record Card (issued by the Department of Health and Human Services Centers for Disease Control & Prevention or WHO Yellow Card) which includes name of person vaccinated, type of vaccine provided and date last dose administered); *or*
- a photo of a Vaccination Record Card as a separate document; *or*
- a photo of the client’s Vaccination Record Card stored on a phone or electronic device; *or*
- documentation of COVID-19 vaccination from a health care provider; *or*
- digital record that includes a QR code that when scanned by a SMART Health Card reader displays to the reader client name, date of birth, vaccine dates and vaccine type; *or*
- documentation of vaccination from other contracted employers who follow these vaccination records guidelines and standards.

TBS staff will provide vaccine verification to the Head of School. Parents must submit vaccine information to [Curacubby](#) by uploading proof of vaccination to their child’s Forms page.

Students who are not fully vaccinated, or for whom vaccination status is unknown or documentation is not provided, will be considered unvaccinated.

Masks

On August 2, 2021, the [San Mateo County Health Officer issued an order](#) requiring masks to be worn regardless of vaccination status in all indoor public settings, venues, gatherings, and workplaces, including schools. Universal masking inside schools addresses concerns about variants and provides extra protection for students who are not vaccinated. It also made it possible for CDPH to lift physical distancing requirements, which had been a key barrier to all students returning to in-person learning on a full-time basis last year.

CDPH will continue to assess conditions and update its own mask requirements.

Masks Indoors

- All TK-12 students are required to mask indoors except those who are exempt based on [CDPH face mask guidance](#). Exemptions include:
 1. Persons with a medical condition, mental health condition, or disability that prevents wearing a mask. This includes persons with a medical condition for whom wearing a mask could obstruct breathing or who are unconscious, incapacitated, or otherwise unable to remove a mask without assistance.
 2. Persons who are hearing impaired, or when communicating with a person who is hearing impaired, the ability to see the mouth is essential for communication.
- Adults in TK-12 school settings are required to mask.
 1. Assessing for exemption due to a medical condition, mental health condition, disability that prevents wearing a mask, or hearing impairment is a medical determination and therefore must be made by a physician, nurse practitioner, or other licensed medical professional practicing under the license of a physician. Self-attestation and parental attestation for mask exemptions due to the aforementioned conditions do not constitute medical determinations. ([CDPH FAQ](#)).
- Persons exempted from wearing a mask due to a medical condition, must wear a non-restrictive alternative, such as a face shield with a drape on the

bottom edge, as long as their condition permits it.

- Schools must provide a mask to students who fail to bring one.
- In limited situations where a mask cannot be used for pedagogical or developmental reasons, (e.g., communicating or assisting young children or those with special needs) a face shield with a drape ([per CDPH guidelines](#)) can be used instead of a mask while in the classroom as long as the wearer maintains physical distance from others. Staff must return to wearing a mask outside of the classroom.
- No disciplinary action should be taken against a student who does not have a mask as described in the [U.S. Department of Education COVID-19 Handbook, Volume 1](#).
- Students who participate in indoor sports and other higher-risk activities must wear masks and also maintain physical distance as much as possible.
- If students are participating in a school event or being supervised by school staff, face mask guidance for K-12 settings must be followed regardless of location.
- The Burkard School will follow the following protocols for enforcing the mask requirements:
 1. Staff will give verbal reminders to wear the mask correctly (over the nose).
 2. Staff will offer high verbal praise/positive reinforcement for compliance.
 3. Staff will offer mask breaks in designated areas.
 4. If a student continuously refuses to wear a mask despite these protocols, parents will be called to take the student home for the day. This is not a disciplinary measure but rather a necessary safety measure.

Masks Outdoors

- Masks are optional outdoors for all in TK-12 school settings. However, particularly in areas of substantial to high transmission, [CDC recommends](#) that people who are not fully vaccinated wear a mask in crowded outdoor settings or during activities that involve sustained close contact with other people who are not fully vaccinated.
- Due to our small school size and to optimize our students' school experience, we will no longer require masks outdoors. **If you prefer to have your child wear a mask outdoors, please let us know. We will reinforce this preference on the playground.**

Additional Mask Guidance from Cal/OSHA

- According to the San Mateo County Public Health Officer, his [August 2nd mask order](#) takes precedence over the Emergency Temporary Standards (ETS) from Cal/OSHA.
- Employees are not required to wear masks when outdoors regardless of vaccination status except during outbreaks.
- Employees are explicitly allowed to wear a mask without fear of retaliation from employers.
- Employees who are not fully vaccinated may request respirators for voluntary use from their employers at no cost and without fear of retaliation from their employers.
- In outbreaks, all employees must wear masks indoors and outdoors when six-foot physical distancing cannot be maintained, regardless of vaccination status.

Physical Distancing

- The CDPH does not include any recommendations concerning physical distancing in schools and reports, "Recent evidence indicates that in-person instruction can occur safely without minimum physical distancing

requirements when other mitigation strategies (e.g., masking) are implemented.”

- CDPH’s universal masking requirement addresses [CDC recommendations](#) concerning physical distancing.
- For the time being, we will space the desks apart in the classroom as much as possible by keeping the couches and large common table out of the classroom to provide more space.
- Eating will happen distanced and outdoors unless it is raining, in which case the students will eat at their desks.
- Cal/OSHA has eliminated physical distancing requirements except where an employer determines there is a hazard and for certain employees during [major outbreaks](#). Employers must implement physical distancing and barriers during a major outbreak (20 or more cases in an exposed group of employees).

Gatherings

CDPH does not address gatherings in its guidance. However, the San Mateo County Public Health Officer’s [August 2nd universal mask requirement](#) applies to indoor settings, venues, gatherings, and workplaces.

At this time, The Burkard School will limit gatherings to staff meetings only.

Ventilation

The Burkard School’s ventilation system is MERV-13 rated, properly installed, and properly maintained. In addition, we run in-room [Blue Pure 211+](#) air purifiers in each classroom.

Stay Home When Sick and Get Tested

The CDPH notes that getting tested for COVID-19 when symptoms are consistent with COVID-19 will help with rapid contact tracing and prevent possible spread at schools. The Burkard School follows the following protocols recommended by the

CDPH:

- Advise staff members and students with symptoms of COVID-19 infection not to return for in-person instruction until they have met these criteria:
 1. At least 24 hours have passed since resolution of fever without the use of fever-reducing medications; *and*
 2. Other symptoms have improved; *and*
 3. They have a negative COVID-19 test, *OR* a healthcare provider has provided documentation that the symptoms are typical of their underlying chronic condition (e.g., allergies or asthma) *OR* a healthcare provider has confirmed an alternative named diagnosis (e.g., Streptococcal pharyngitis, Coxsackie virus), *OR* at least 10 days have passed since symptom onset.

Common Symptoms of COVID-19 (CDPH)

- Headache
- Fever or chills
- Cough
- Shortness of breath or difficulty breathing
- Fatigue (tiredness)
- Muscle or body aches
- New loss of taste or smell
- Sore throat
- Congestion or runny nose
- Nausea or vomiting
- Diarrhea

When Students or Staff Are Sick at School

When a student or staff member is sick while on campus, school staff will escort the person to the school's isolation room and provide a COVID-19 test, if available. If not, the student or staff member should leave campus and seek a test from their healthcare provider or a community testing site.

If the student or staff member tests positive for COVID-19, they will be directed to

contact their healthcare provider for follow up response and monitoring.

If the student or staff member tests negative for COVID-19, they may return to school following the school's health policies, which is usually 24 hours after a fever subsides without the use of medication and symptoms have improved.

Hand Hygiene

- Staff members will teach and reinforce washing hands with soap and water for at least 20 seconds, avoiding contact with one's eyes, nose, and mouth, and covering coughs and sneezes among students and staff.
- Staff members will promote hand washing throughout the day, especially before and after eating, after using the toilet, and after handling garbage, or removing gloves.
- Staff members will ensure adequate supplies to support healthy hygiene behaviors, including soap, tissues, no-touch trash cans, masks, and hand sanitizers with at least 60 percent ethyl alcohol for staff and children who can safely use hand sanitizer.
- Hand sanitizers will be stored up, away, and out of sight of young children and should be used only with adult supervision for children under 6 years of age.

Cleaning

- Per the San Mateo County Coalition for Safe Schools and Communities' [Pandemic Recovery Framework](#), cleaning once a day is usually enough to sufficiently remove potential viruses that may be on surfaces.
- Disinfecting (using disinfectants on the [U.S. Environmental Protection Agency COVID-19 list](#)) removes any remaining germs on surfaces, which further reduces any risk of spreading infection.

- Desks and frequently-touched surfaces will be disinfected once per day.
- If a facility has had a sick person with COVID-19 within the last 24 hours, staff will clean AND disinfect the spaces occupied by that person during that time.

Cohorting

Maintaining cohorts is no longer required by the San Mateo County Health Officer or the San Mateo County Office of Education. As a small school, we will not be cohorting to allow for a more robust student experience, including having lunch recess with another class and after school enrichment activities.

Adjusting Our Plan

If conditions worsen or a new health order or guidance is released that impacts school operations, The Burkard School will adjust its plan accordingly. Changes may include:

- Cohorting
- Return to Distance Learning

Visitors

The Burkard School will request that visitors provide proof of vaccination status before entering campus. If visitors are not vaccinated or refuse or are unable to provide this information, they must follow all school policies related to not vaccinated individuals. At TBS, the following protocols will be in place:

- All visitors are required to wear masks while indoors on campus unless exempt.
- Only vaccinated professionals such as psychologists and other personnel that support our students' development will be allowed inside the classrooms for observations. These vaccinated professionals must provide

proof of vaccination status.

- Non-professional visitors such as prospective families or visitors who have not submitted proof of vaccination status may stand at the doorway to observe and not enter the classroom.
- Visitors will be screened for symptoms and their temperature taken before entering campus.

Extracurricular and Athletic Activities

- Students who are not vaccinated may not participate in extracurricular and athletic activities after an exposure.
- Students who are vaccinated and have been exposed do not require quarantine unless symptomatic.
- Students who are not vaccinated and have been exposed must quarantine for 10 full days for all extracurricular activities (e.g., at school, within the community settings).

Travel

Please see the table below for CDC recommendations and requirements concerning travel, as well as the CDPH's [flyer concerning travel](#).

Travel Recommendations and Requirements

Domestic Travel	Not Vaccinated	Fully Vaccinated
Get tested 1-3 days before travel	✓	

Get tested 3-5 days after travel and self-quarantine for 7 days. Self-quarantine for 10 days if you don't get tested.	✓	
Self-monitor for symptoms	✓	✓
Wear a mask and take other precautions during travel	✓	✓

International Travel	Not Vaccinated	Fully Vaccinated
Get tested 1-3 days before traveling out of the US	✓	
Mandatory test required before flying to US	✓	✓
Get tested 3-5 days after travel	✓	✓
Self-quarantine after travel for 7 days with a negative test or 10 days without test	✓	
Self-monitor for symptoms	✓	✓
Wear a mask and take other precautions during travel	✓	✓

Health Screening

- Families of students who are not vaccinated must continue to submit nightly screening emails attesting to the health status of the family. Each parent or guardian must submit the email.
- All students, staff, and visitors will have their temperature taken before entering campus.

Covid Testing

- At this time, due to the sensory sensitivity of many of our students, Covid testing will not be required of students unless (1) they are symptomatic or (2) they are not fully vaccinated and have been exposed to someone with COVID-19.
- According to the August 11, 2021, [health order](#), the schools and district must adhere to the following testing requirements which apply to workers

and volunteers in schools:

1. Asymptomatic workers who are not fully vaccinated are required to undergo diagnostic screening testing.
2. Workers may be tested with either antigen or molecular tests to satisfy this requirement.
3. Workers who are not fully vaccinated must be tested at least once weekly with either PCR testing or antigen testing. Any PCR (molecular) or antigen test used must either have Emergency Use Authorization by the FDA or be operating per the Laboratory Developed Test requirements by the U.S. Centers for Medicare and Medicaid Services.
4. Workers who are not fully vaccinated must also observe all other infection control requirements and are not exempted from the testing requirement even if they have a medical contraindication to vaccination, since they are still potentially able to spread the illness. Previous history of COVID-19 from which the individual recovered more than 90 days earlier, or a previous positive antibody test for COVID-19, does not waive this requirement for testing.

Definitions

Fully vaccinated: two weeks have passed since individual received their final dose of COVID-19 vaccine.

Close Contact: anyone who was within 0-6 feet of a Case for more than 15 minutes over a 24-hour period.

Response Testing and Quarantine

Testing and Quarantine of Vaccinated Close Contacts

Currently there is no duration limitation on these recommendations after individuals are fully vaccinated. See CDPH's [COVID-19 Public Health](#)

Recommendations for Fully Vaccinated People for additional information.

The Burkard School will be adhering to the following recommendations for fully vaccinated individuals:

- Fully vaccinated people should get tested if experiencing **COVID-19 symptoms** .
- If fully vaccinated people test positive for COVID-19, they should follow CDPH and local health department guidance regarding isolation and/or exclusion from high-risk settings.
- Fully vaccinated students, teachers, and staff with no COVID-19 symptoms do not need to be tested following an exposure to someone with COVID-19.
- Following a known exposure at work, fully vaccinated workers do not need to quarantine if asymptomatic.
- Per Cal/OSHA, fully vaccinated employees do not need to be offered testing or excluded from work after close contact unless they have COVID-19 symptoms.
- The CDC recommends that fully vaccinated people who have a known exposure to someone with suspected or confirmed COVID-19 be tested 3-5 days after exposure and wear a mask in public indoor settings for 14 days or until they receive a negative test result.

Testing of Those Who Previously Had COVID-19

People who have tested positive for COVID-19 within the past three months and recovered do not need to get tested following an exposure as long as they do not develop new symptoms.

Testing and Quarantine of Unvaccinated Close Contacts

When All Parties Were Wearing a Mask

When all parties were wearing a mask in an indoor or outdoor school setting or school bus, **students** who are unvaccinated and are close contacts may undergo a modified 10-day quarantine and continue to attend school for in-person instruction

if they:

- Are asymptomatic;
- Continue to appropriately mask, as required;
- Undergo at least twice weekly testing during the 10-day quarantine; and
- Continue to quarantine for all extracurricular activities at school, including sports, and activities within the community setting.

CDPH provides the following testing guidance for students in modified quarantine.

- Testing should begin immediately after exposure to someone with COVID-19. Subsequent testing should occur at least 3 days apart.
- Quarantine can end after Day 7 if a diagnostic specimen is collected after Day 5 from the date of last exposure and tests negative.

According to CDPH, students in modified quarantine:

- Are strongly encouraged to wear masks when outdoors.
- May use school buses, including buses operated by public and private school systems.
- May participate in all required instructional components of the school day, except activities where a mask cannot be worn, such as while playing certain musical instruments.
- May eat meals on campus using the food service recommendations provided in this framework.

Please note: Modified quarantine does not apply to teachers or other adults.

When One Party Was Not Wearing a Mask

When one party was not wearing a mask, those who remain asymptomatic may discontinue self-quarantine under the following conditions:

- Quarantine can end after Day 10 from the date of last exposure without testing; *OR*
- Quarantine can end after Day 7 if a diagnostic specimen is collected after

Day 5 from the date of last exposure and tests negative.

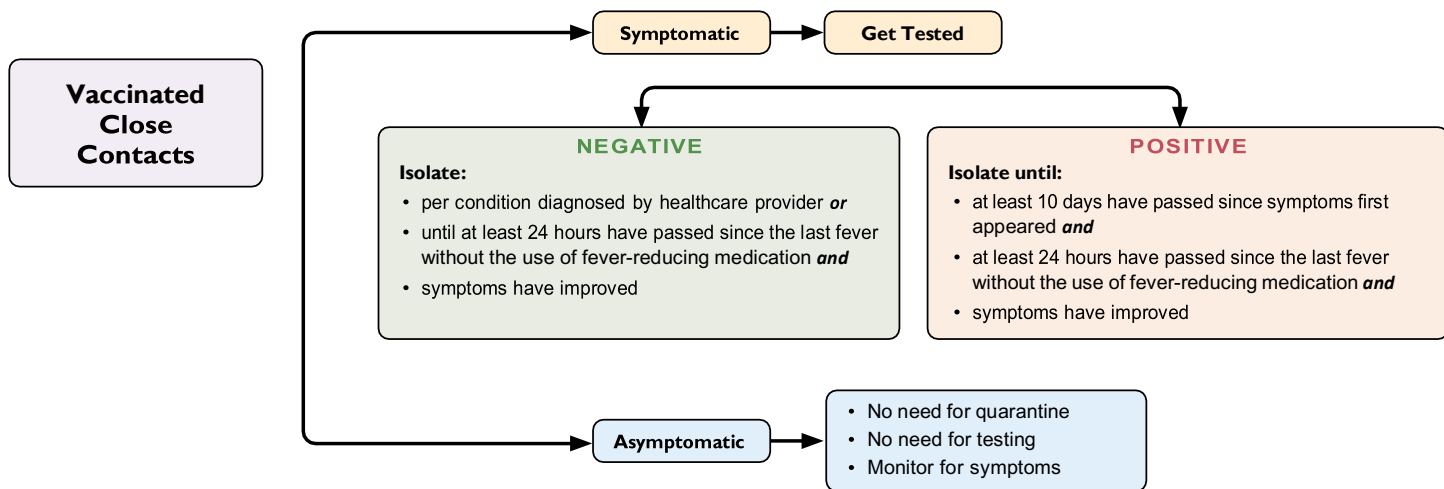
- To discontinue quarantine before 14 days following last known exposure, asymptomatic close contacts must:
 1. Continue daily self-monitoring for symptoms through Day 14 from last known exposure; *AND*
 2. Follow all recommended non-pharmaceutical interventions (e.g., wearing a mask when around others, hand washing, avoiding crowds) through Day 14 from last known exposure.

If any symptoms develop during this 14-day period, the exposed person must immediately isolate, get tested, and contact their healthcare provider with any questions regarding their care.

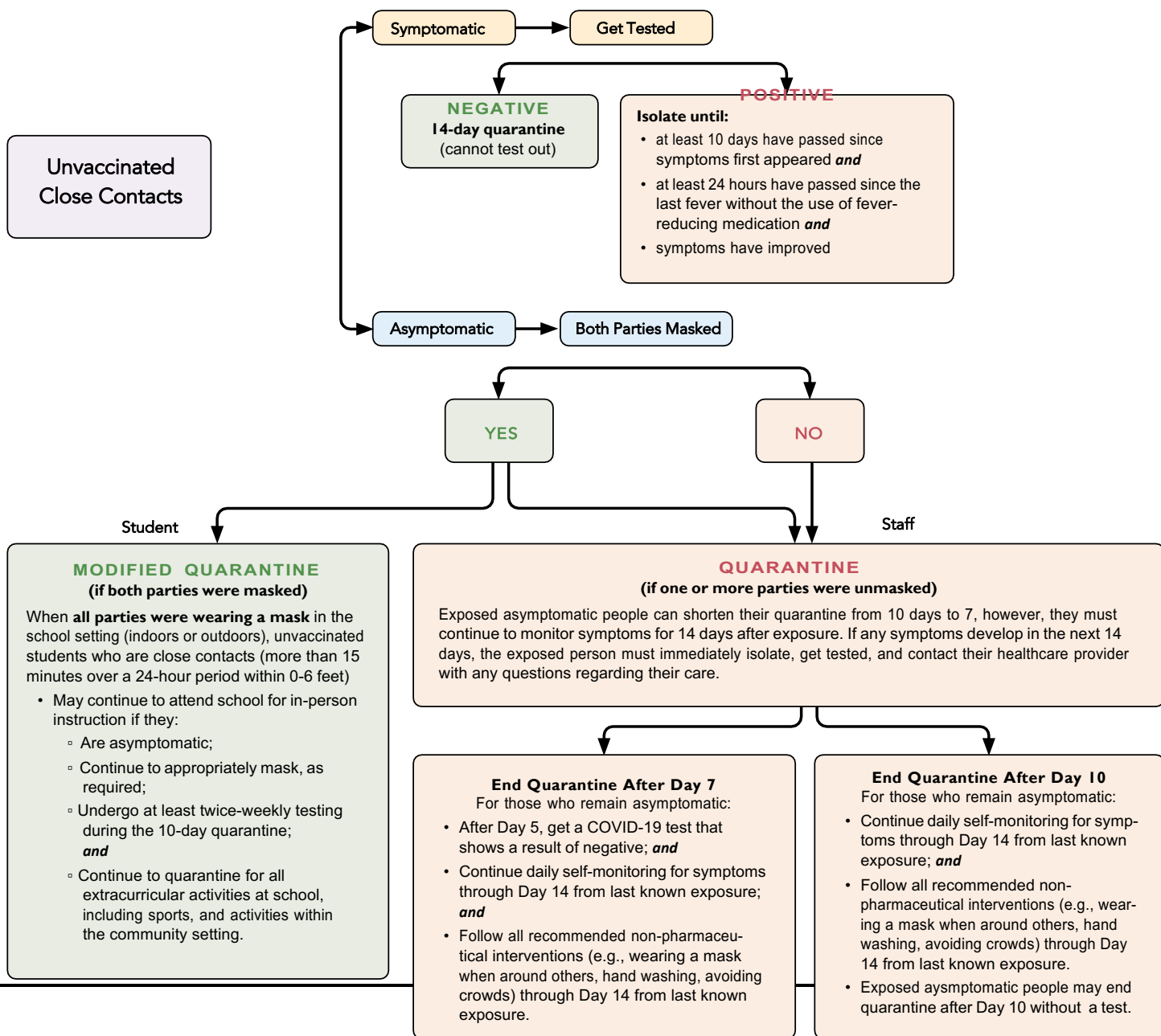
- Collection of diagnostic specimens for asymptomatic persons during quarantine may occur in schools, healthcare settings, or other locations supervised by school or healthcare personnel. Specimens may be processed at the point-of-care (POC) or in a laboratory.
- At this time, at-home testing is not recommended for evaluation of an individual's status during quarantine.
- For persons in quarantine who experience symptoms, a negative result from an antigen test or POC molecular test results should be confirmed with a laboratory-based PCR test.

Isolation

For both vaccinated and unvaccinated persons, follow the [CDPH Isolation Guidance](#) for those diagnosed with COVID-19.



COVID-19 Exposure at School (CDPH)



Case Reporting and Contact Tracing

A school in San Mateo County with one or more confirmed cases of COVID-19 in their school community must complete the following steps as soon as possible:

- The School/District COVID-19 Point Person must report all COVID-19 cases and clusters of undiagnosed respiratory illness to SMC CD Control as soon as practicable (within 24 hours) at COVID19_SchoolTeam@smcgov.org.
- The School/District COVID-19 Point Person and the assigned San Mateo County Health investigator will be in daily contact Monday – Friday, unless instructed otherwise by SMC CD Control.
- The District COVID-19 Point Person collects data from all schools and must complete a daily report for all new cases (a line list) and submit it via secure email to SMC CD Control daily by 10:00 a.m.
- Schools should notify – to the extent allowable by applicable privacy laws – teachers, staff, and families of students who were close contacts as soon as possible (within the same day if possible) after they are notified that someone in the school has tested positive.
- The District COVID-19 Point Person or Superintendent/Private School Head should notify SMCOE at info@smcoe.org.

Additionally, per Cal/OSHA guidance, employers must:

- Contact the local health department immediately but no longer than 48 hours after learning of three or more COVID-19 cases to obtain guidance on preventing the further spread of COVID-19 within their workplace.
- Maintain accurate records and track all COVID-19 cases, while ensuring medical information remains confidential. These records must be made available to employees, authorized employee representatives, or as otherwise required by law, with personal identifying information removed.
- Report a COVID-19-related serious illness or death immediately to the nearest Cal/OSHA enforcement district office.
- **Per Cal/OSHA** and the district or school's CPP, provide written notice

- within one day of learning of a case to people at the worksite who may have been exposed to COVID-19. This notice must be provided to all employees (and their authorized representative), independent contractors and other employers at the worksite during the high-risk exposure period.

Outbreaks

Cal/OSHA provides the following guidance for employers in the case of an outbreak:

- Provide written notice of workplace outbreaks (three or more cases in an exposed workgroup in a 14-day period) and major outbreaks (20 or more cases within a 30-day period).
- During any outbreak, masks are required regardless of employee vaccination status both indoors and outdoors when employees are less than six feet from another person.
- During major outbreaks, six-foot physical distancing is required where feasible, both indoors and outdoors.